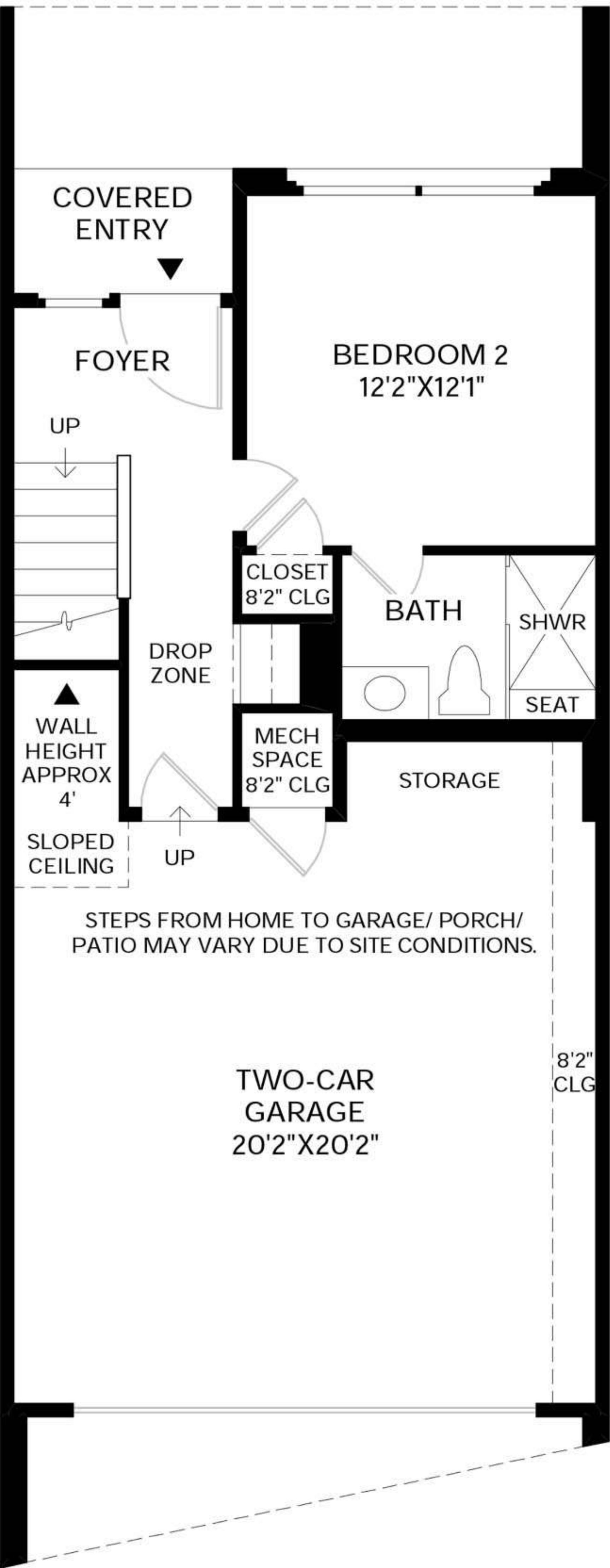
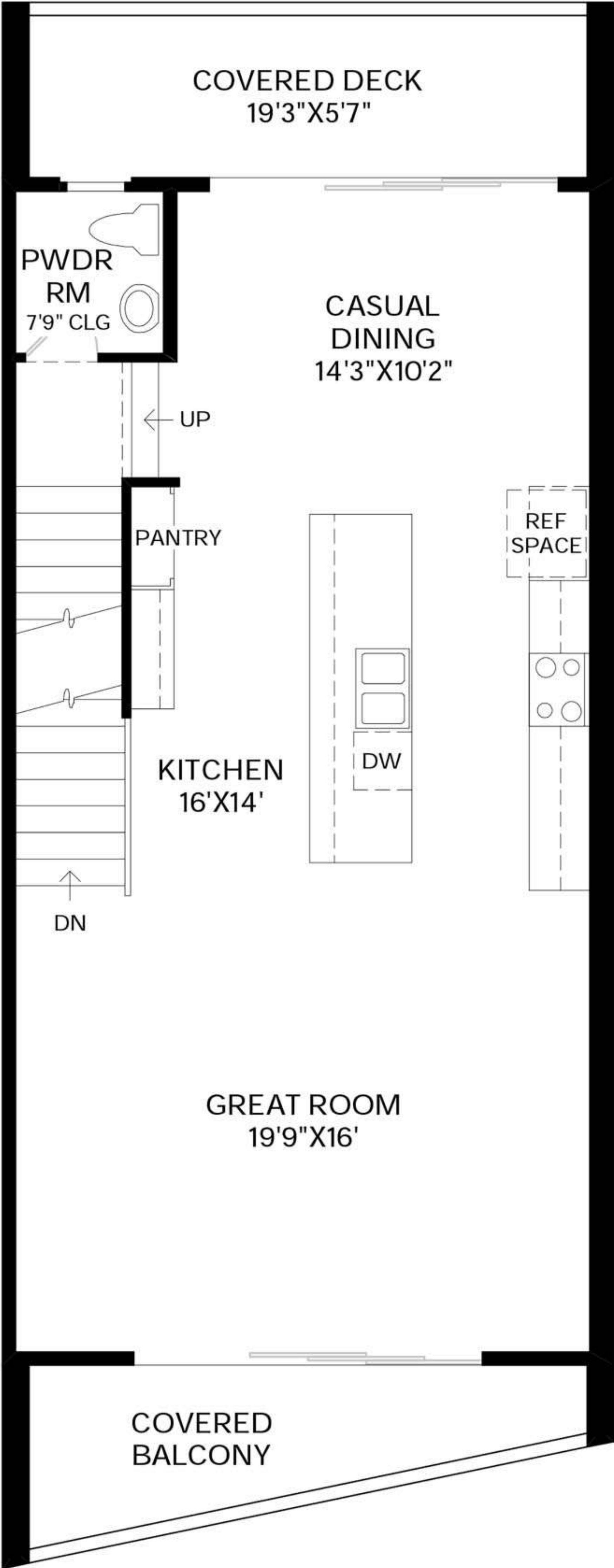


ALISO FLOOR PLAN

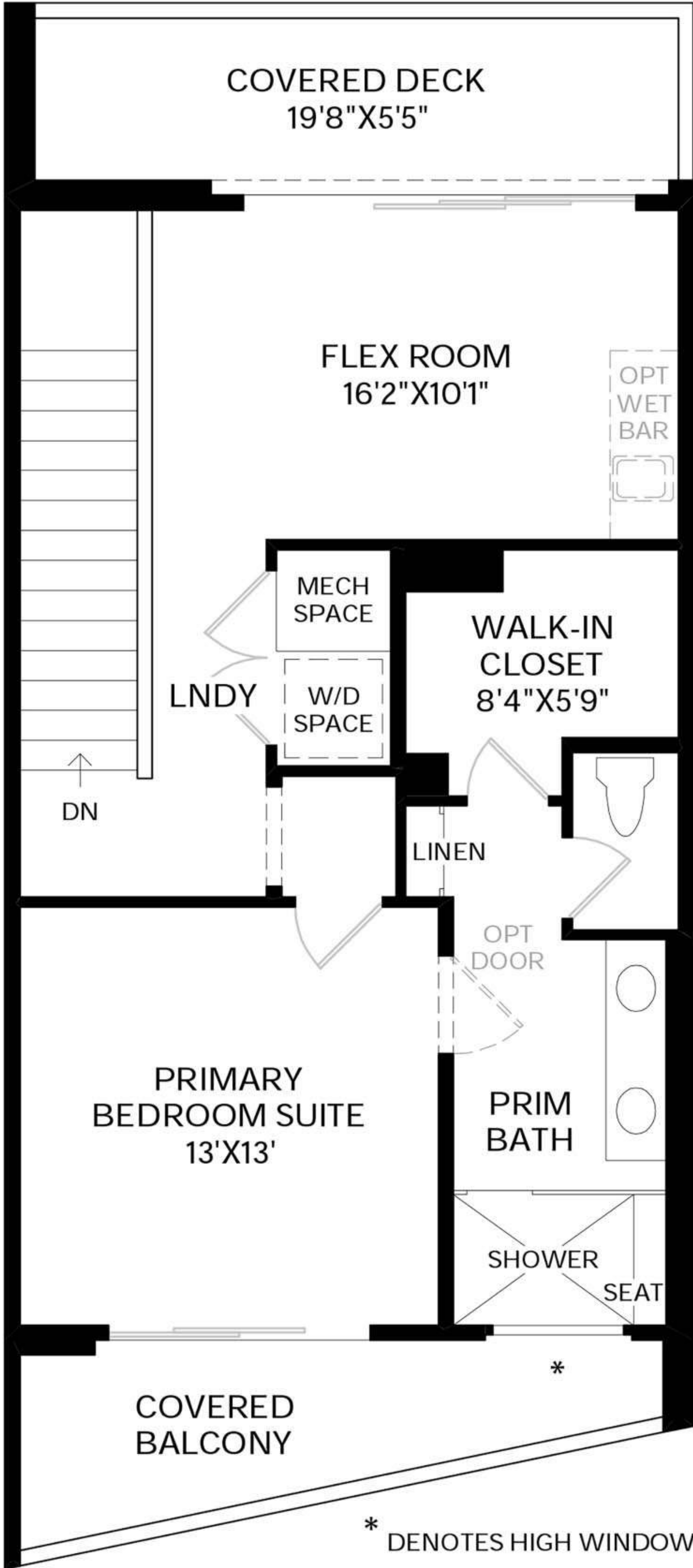
1,840+ SF | 3 STORIES | 2 BEDROOM | 2.5 BATH | 2 CAR GARAGE



First Floor
9' CEILING HEIGHT



Second Floor
9' CEILING HEIGHT

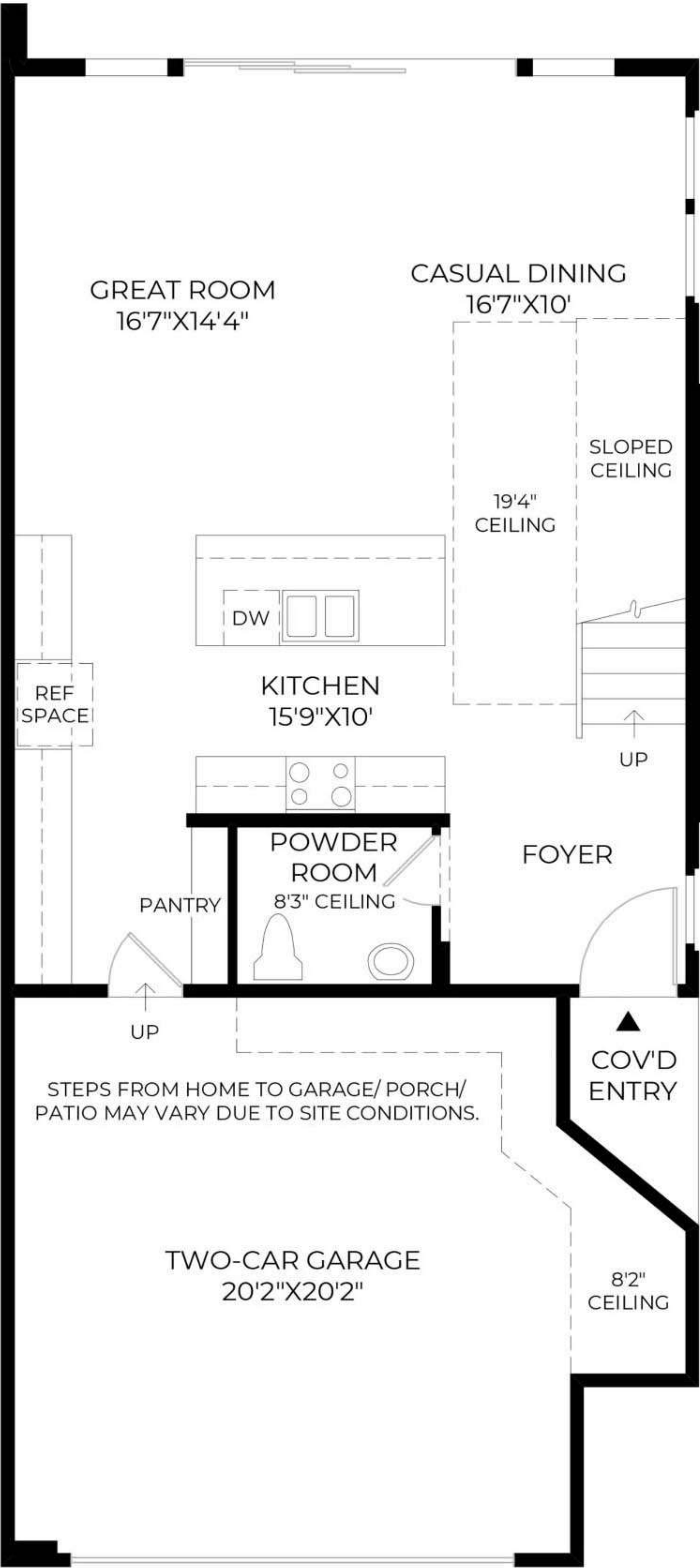


Third Floor
9' CEILING HEIGHT

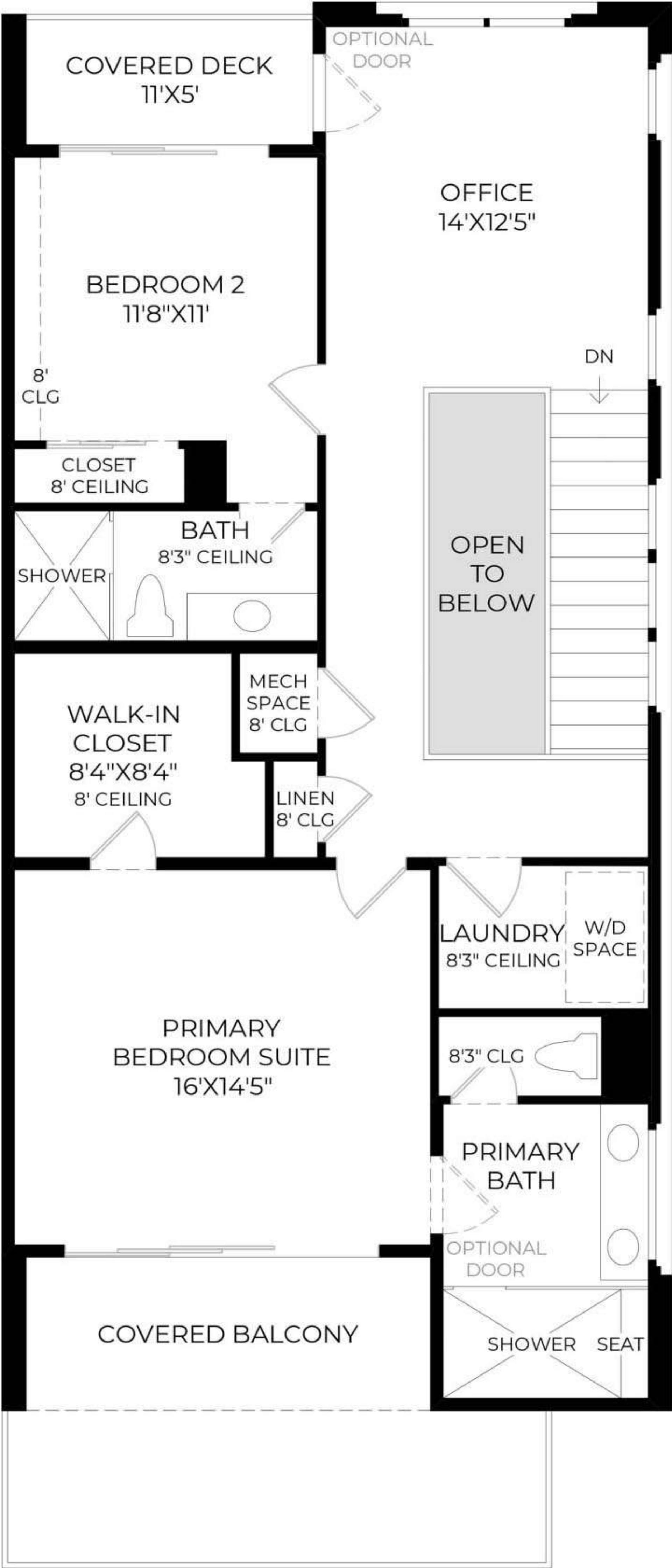
* DENOTES HIGH WINDOW

BRODY FLOOR PLAN

1,924+ SF | 2 STORIES | 2 BEDROOM | 2.5 BATH | 2 CAR GARAGE



First Floor
9' CEILING HEIGHT

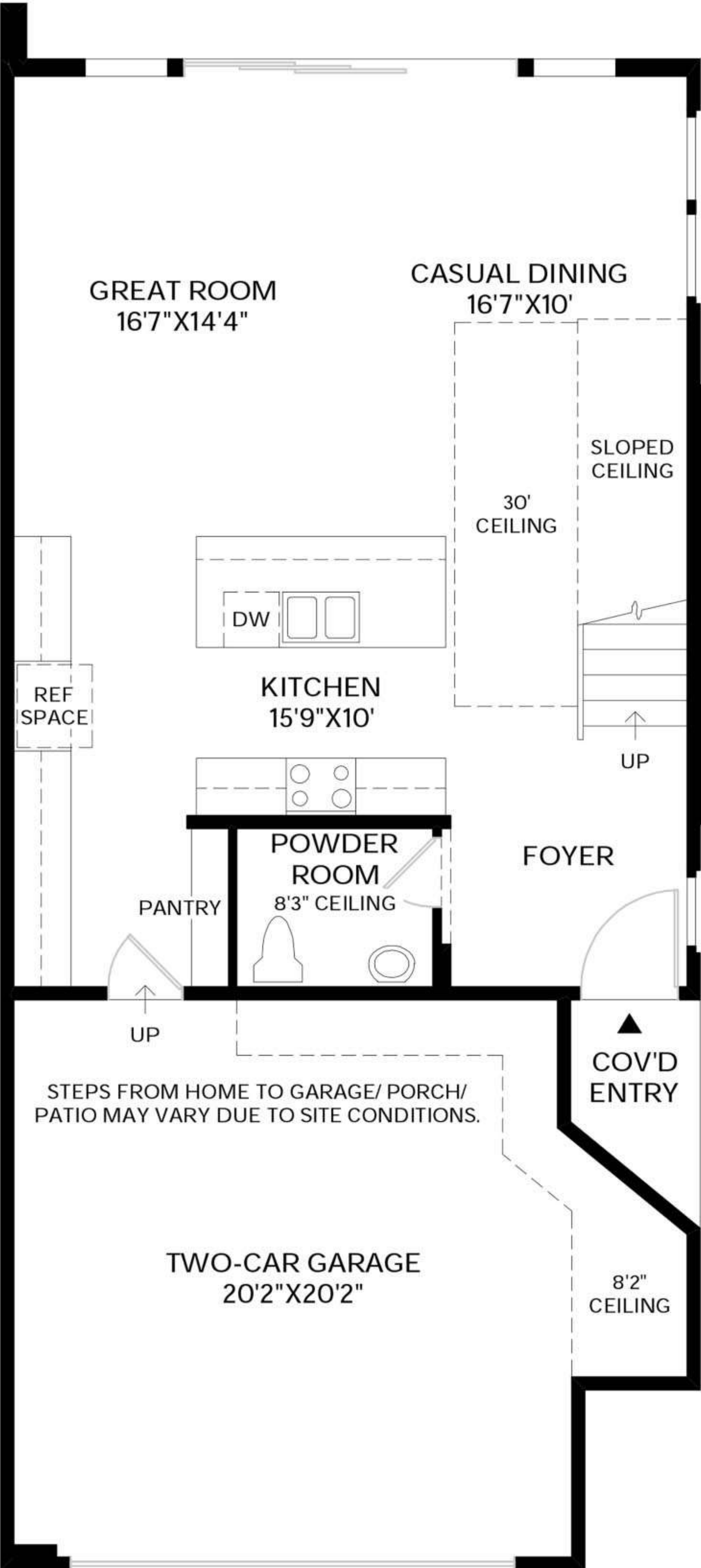


* DENOTES HIGH WINDOW

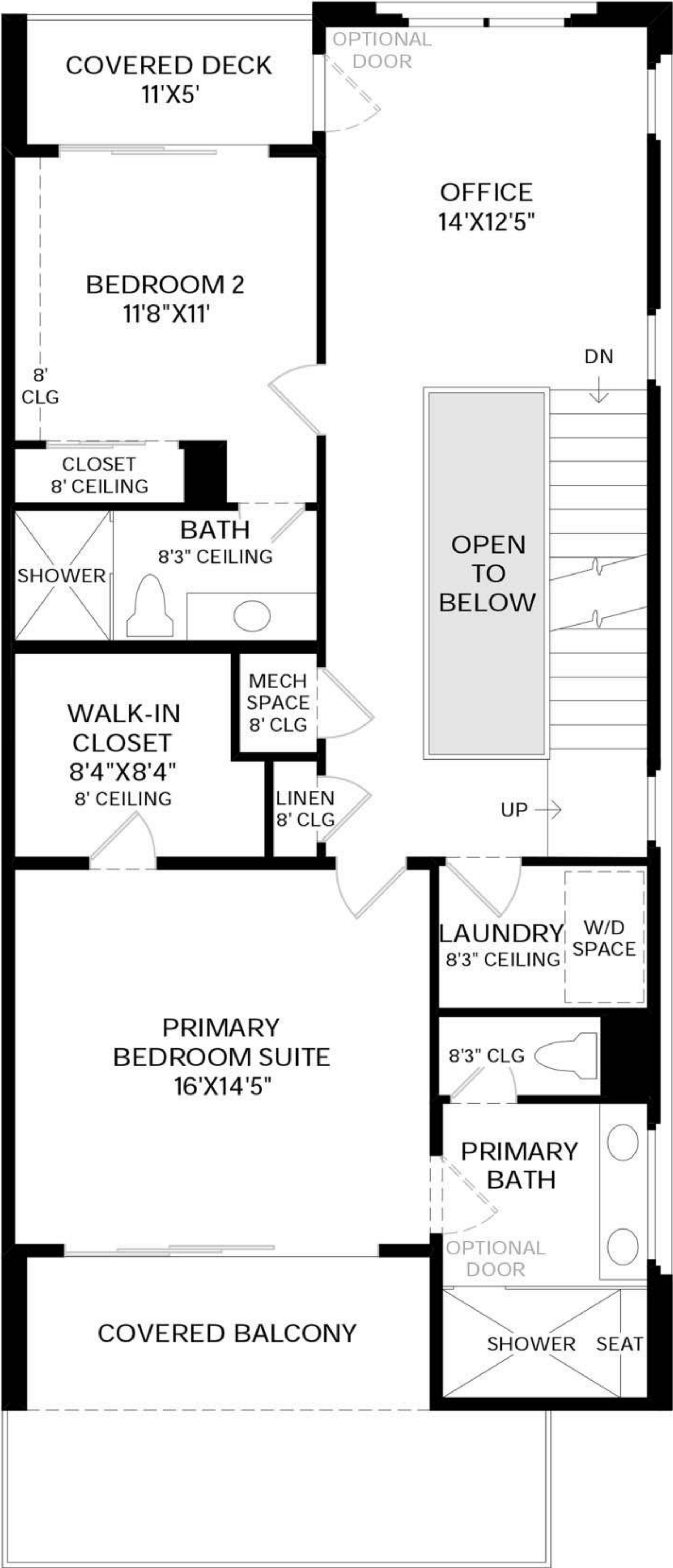
Second Floor
9' CEILING HEIGHT

BRODY ELITE FLOOR PLAN

1,944+ SF | 3 STORIES | 2 BEDROOM | 2.5 BATH | 2 CAR GARAGE

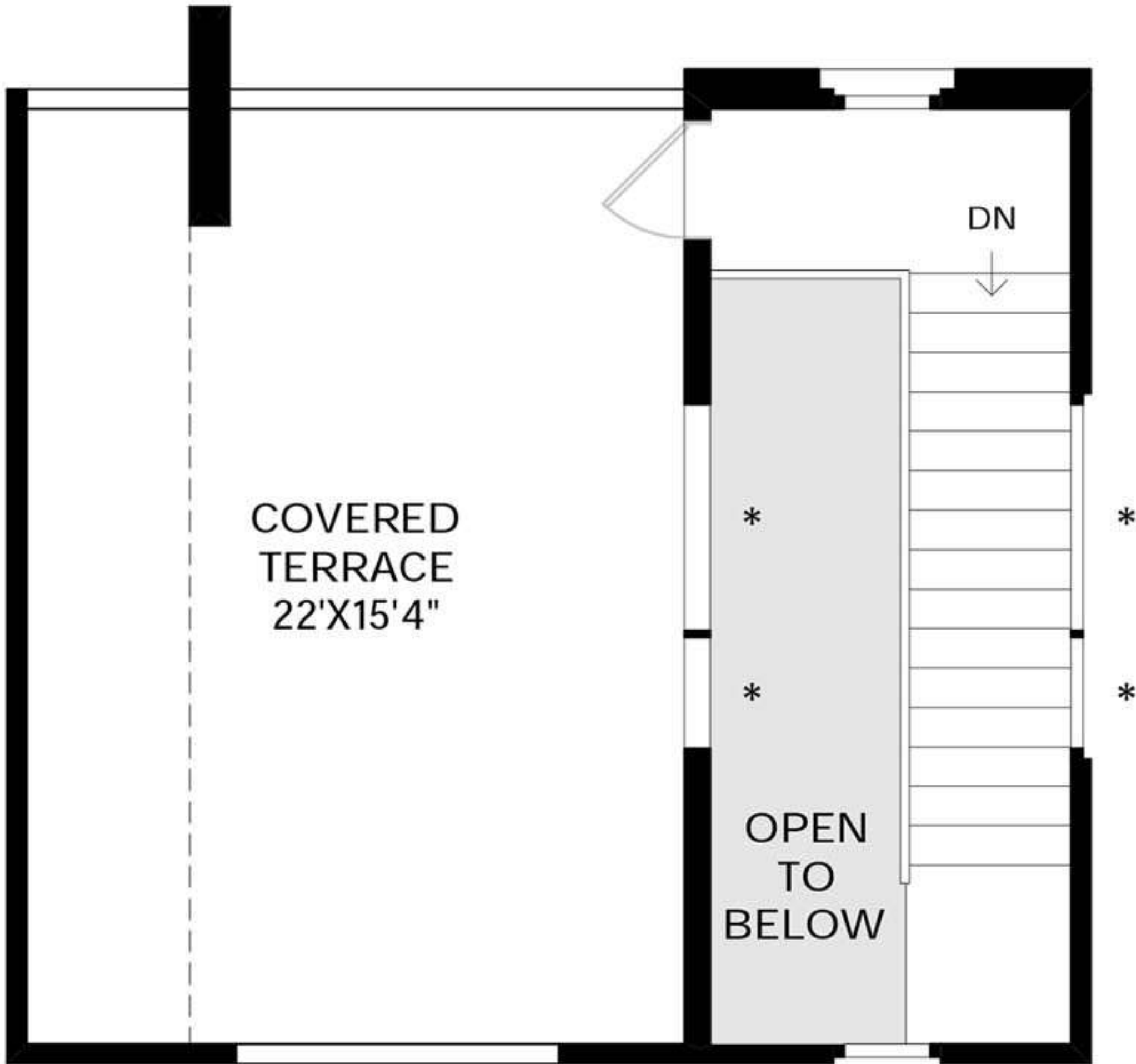


First Floor
9' CEILING HEIGHT



* DENOTES HIGH WINDOW

Second Floor
9' CEILING HEIGHT

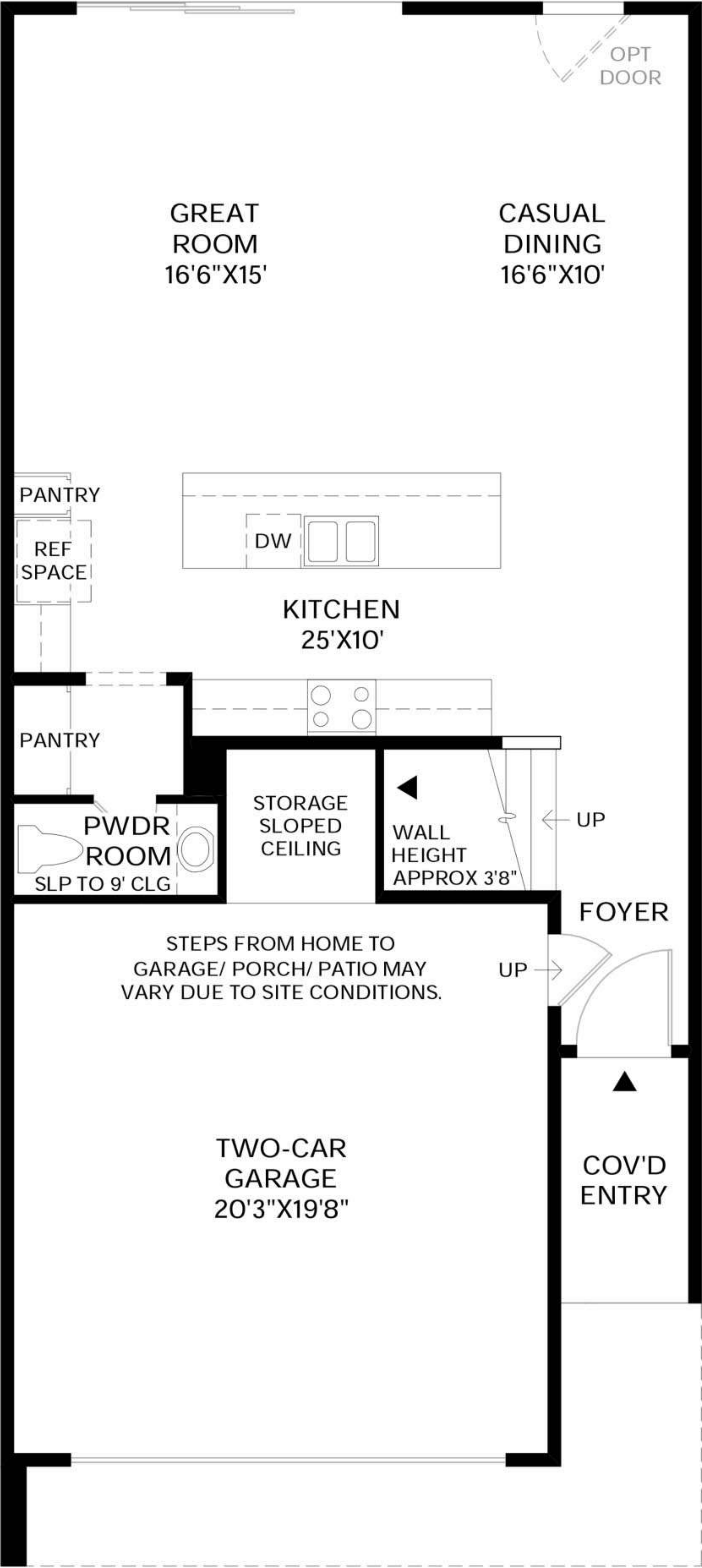


* DENOTES HIGH WINDOW

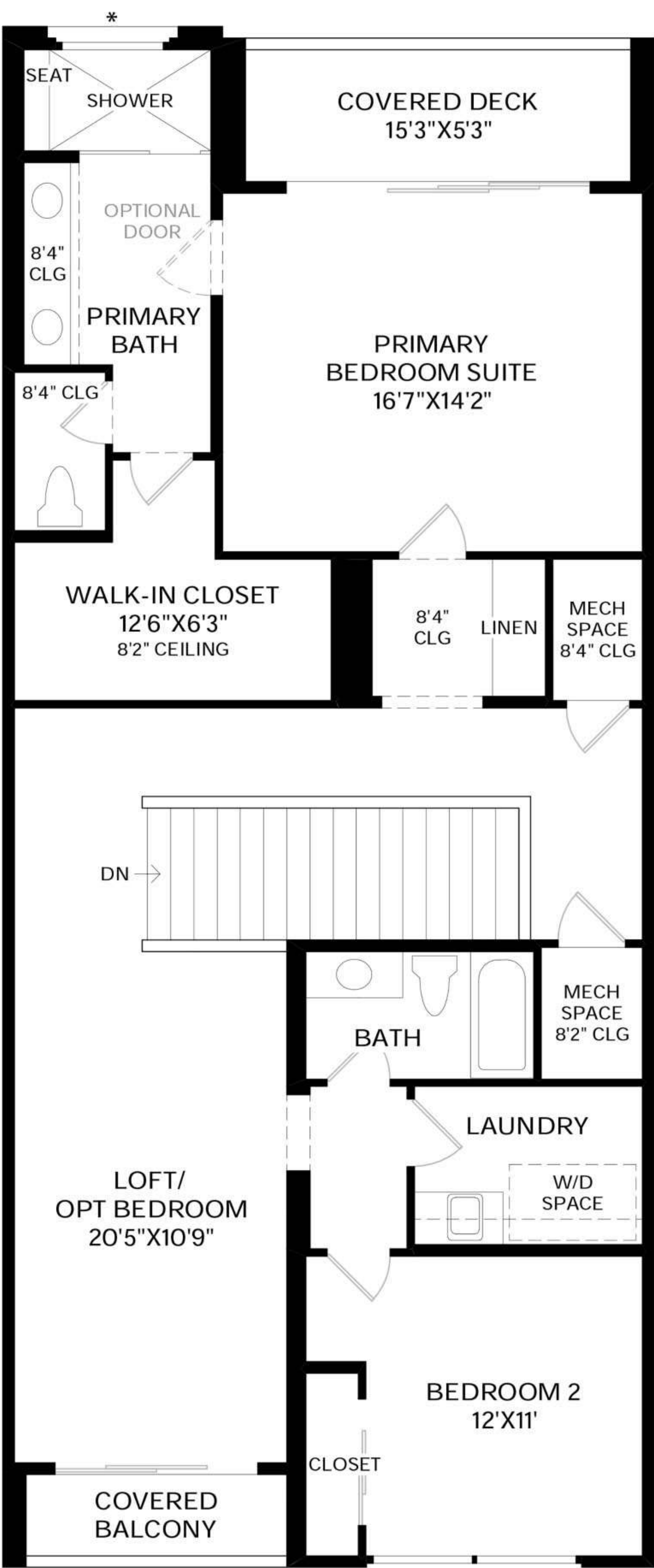
Third Floor
9' CEILING HEIGHT

CAMEO FLOOR PLAN

2,204+ SF | 2 STORIES | 2 BEDROOM | 2.5 BATH | 2 CAR GARAGE



FIRST FLOOR

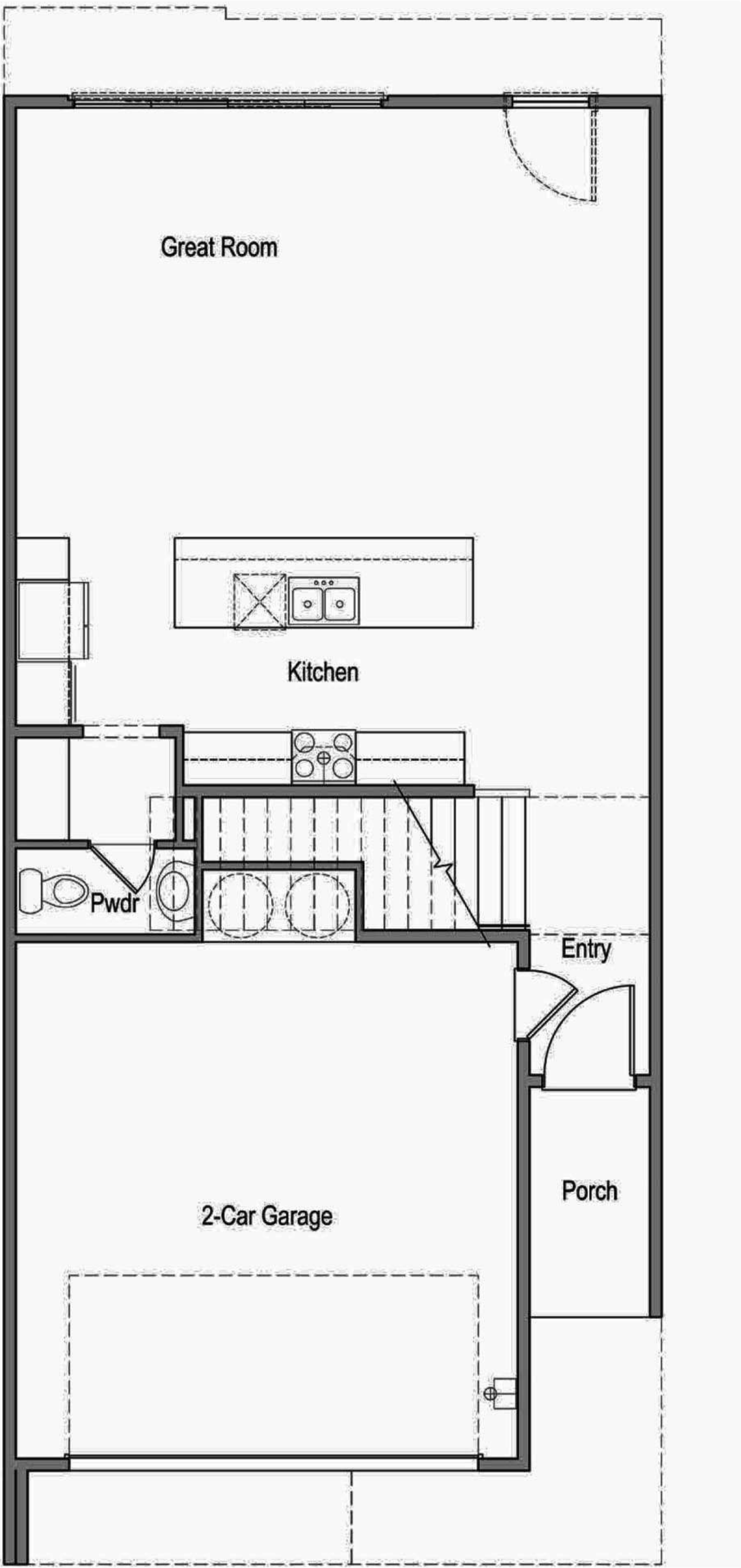


* DENOTES HIGH WINDOW

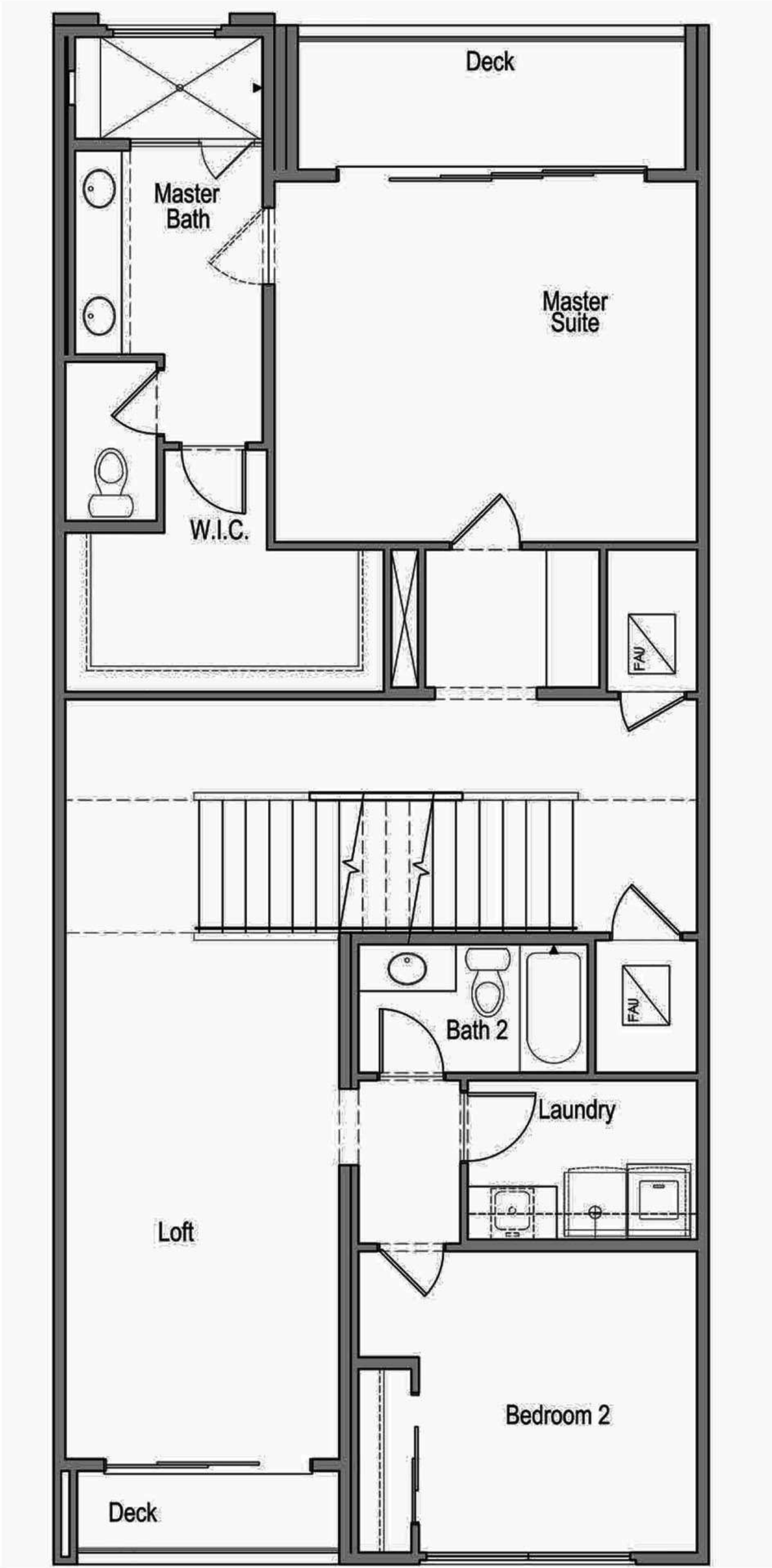
SECOND FLOOR

CAMEO ELITE FLOOR PLAN

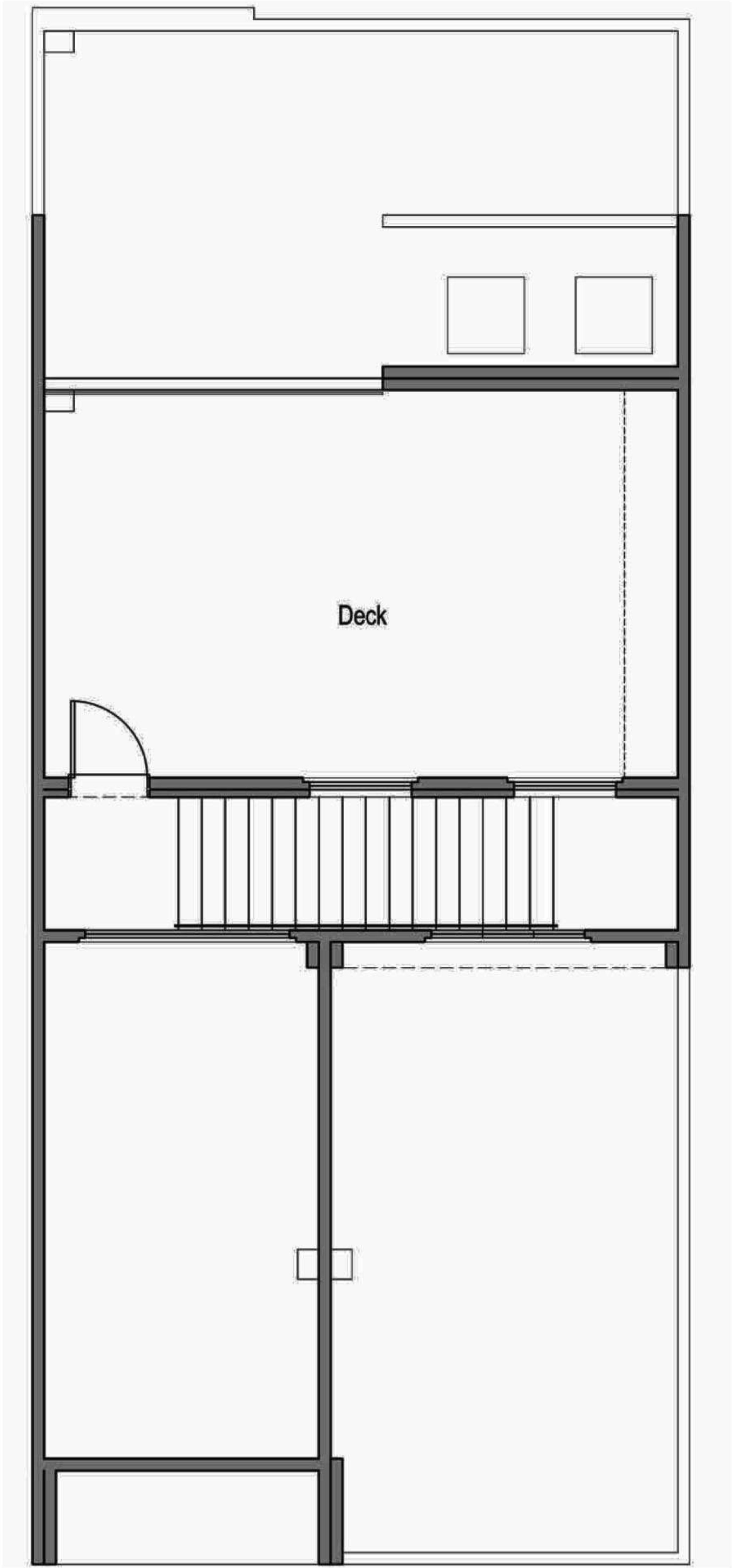
2,240+ SF | 3 STORIES | 2-3 BEDROOM | 2.5 BATH | 2 CAR GARAGE



FIRST FLOOR



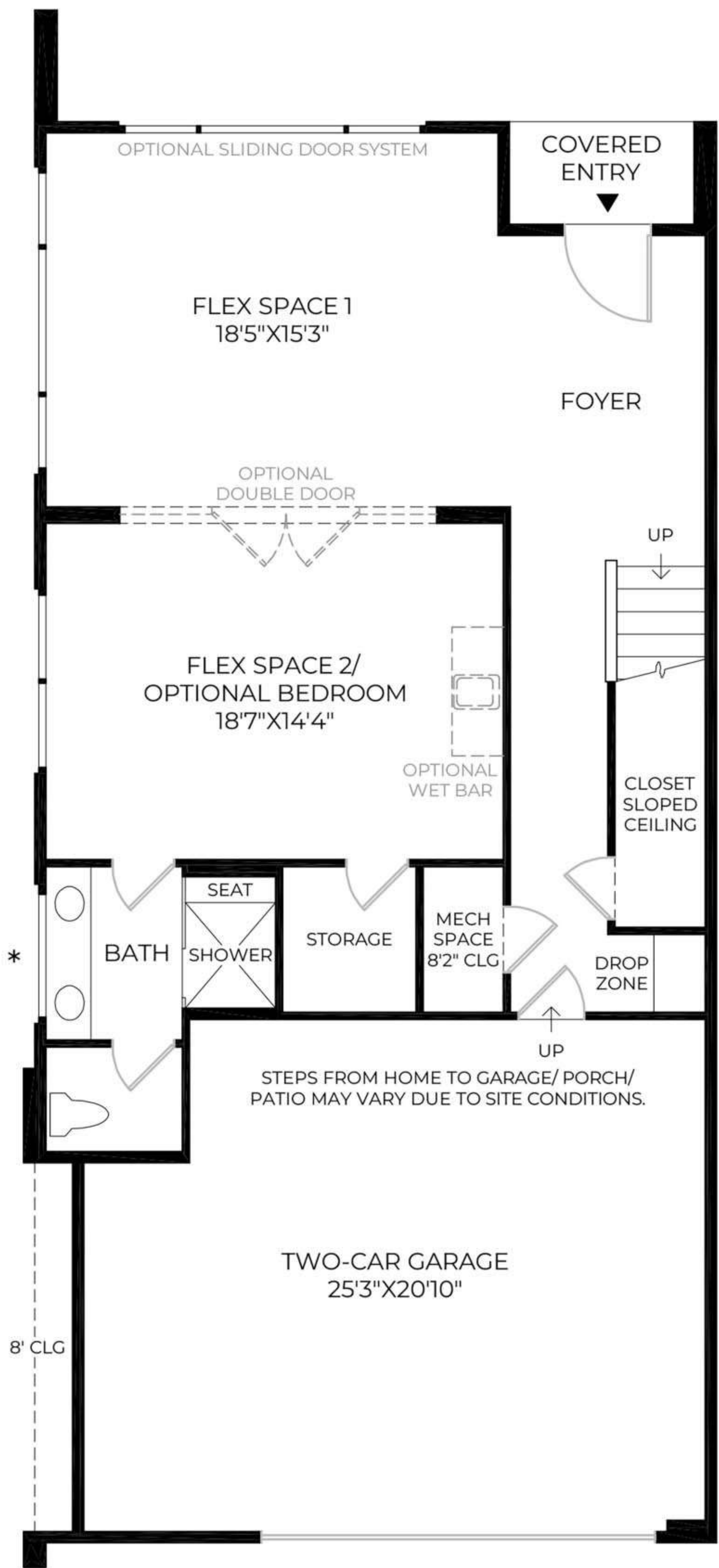
SECOND FLOOR



THIRD FLOOR

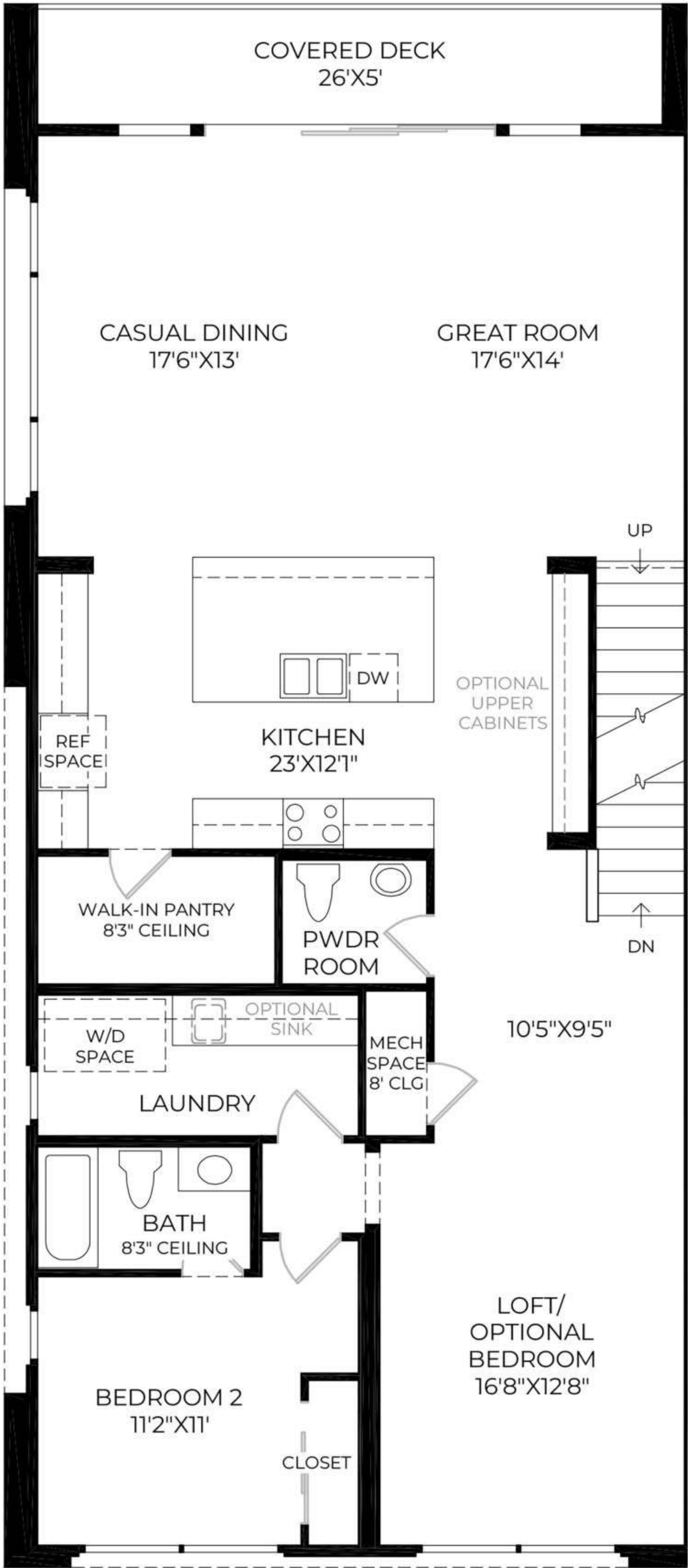
DELMAR FLOOR PLAN

3,269+ SF | 3 STORIES | 3-4 BEDROOM | 3.5 BATH | 2 CAR GARAGE

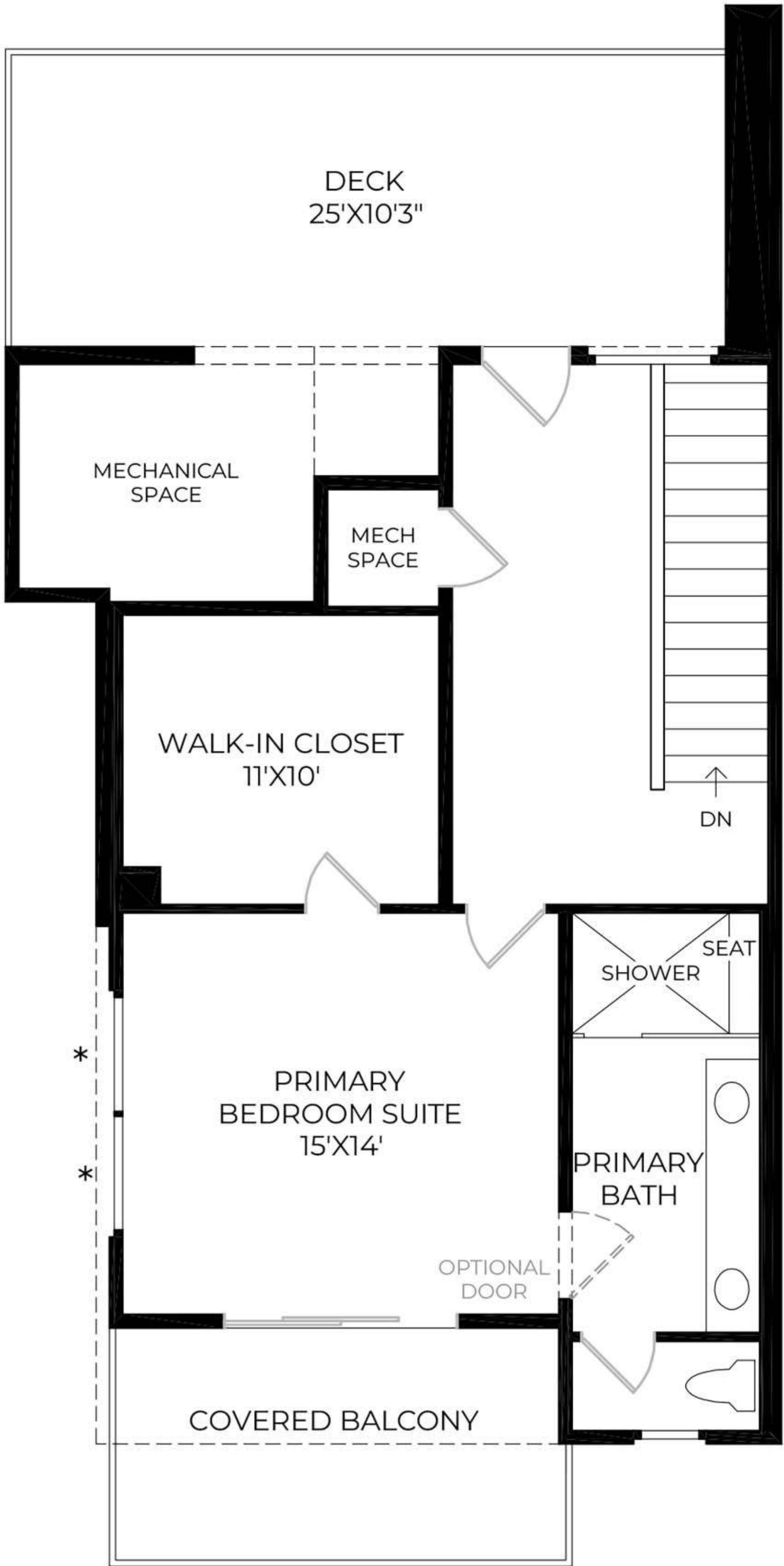


* DENOTES HIGH WINDOW

First Floor
9' CEILING HEIGHT



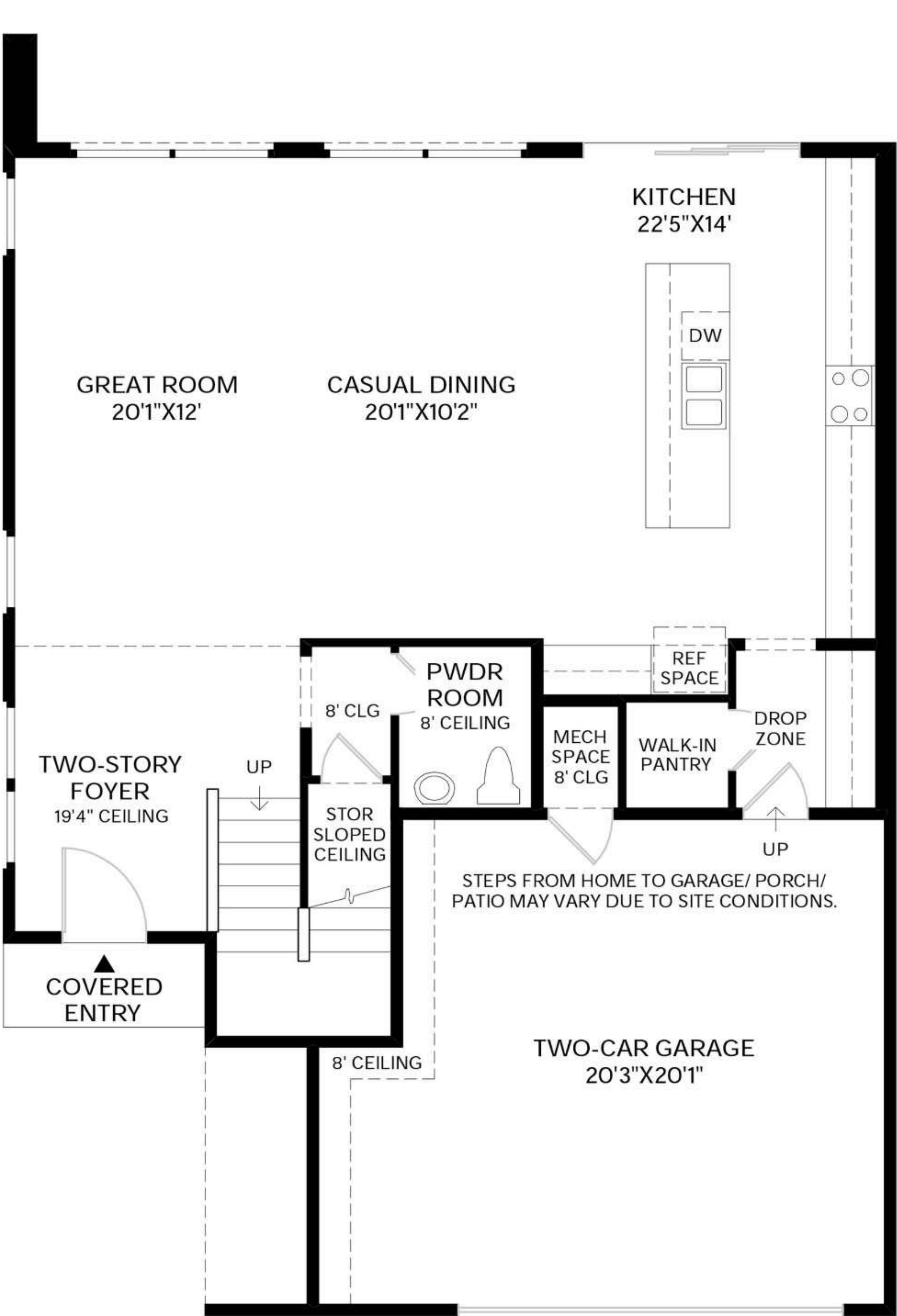
Second Floor
9' CEILING HEIGHT



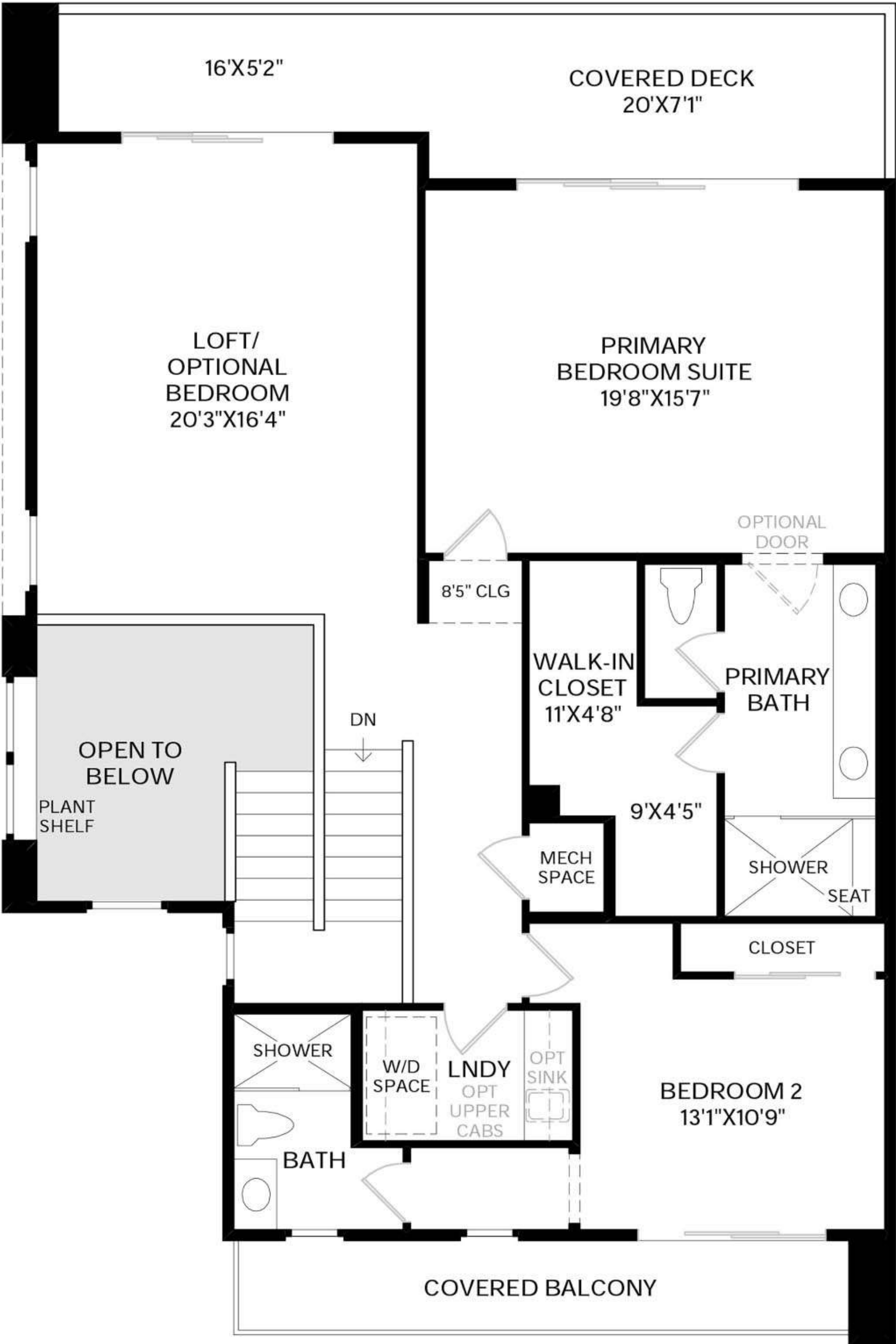
Third Floor
9' CEILING HEIGHT

EASTON FLOOR PLAN

2,554+ SF | 2 STORIES | 2-3 BEDROOM | 2.5 BATH | 2 CAR GARAGE



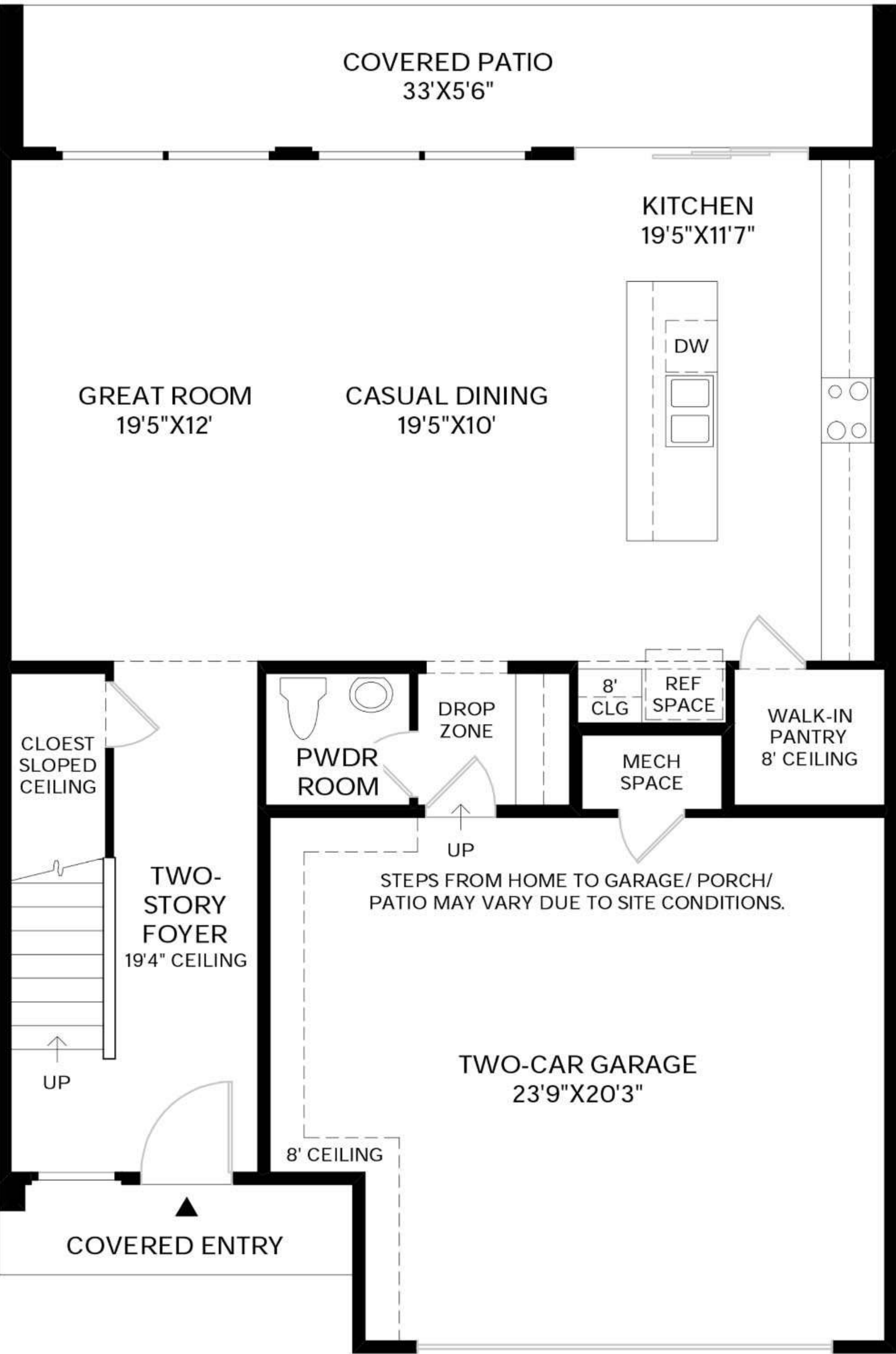
First Floor
9' CEILING HEIGHT



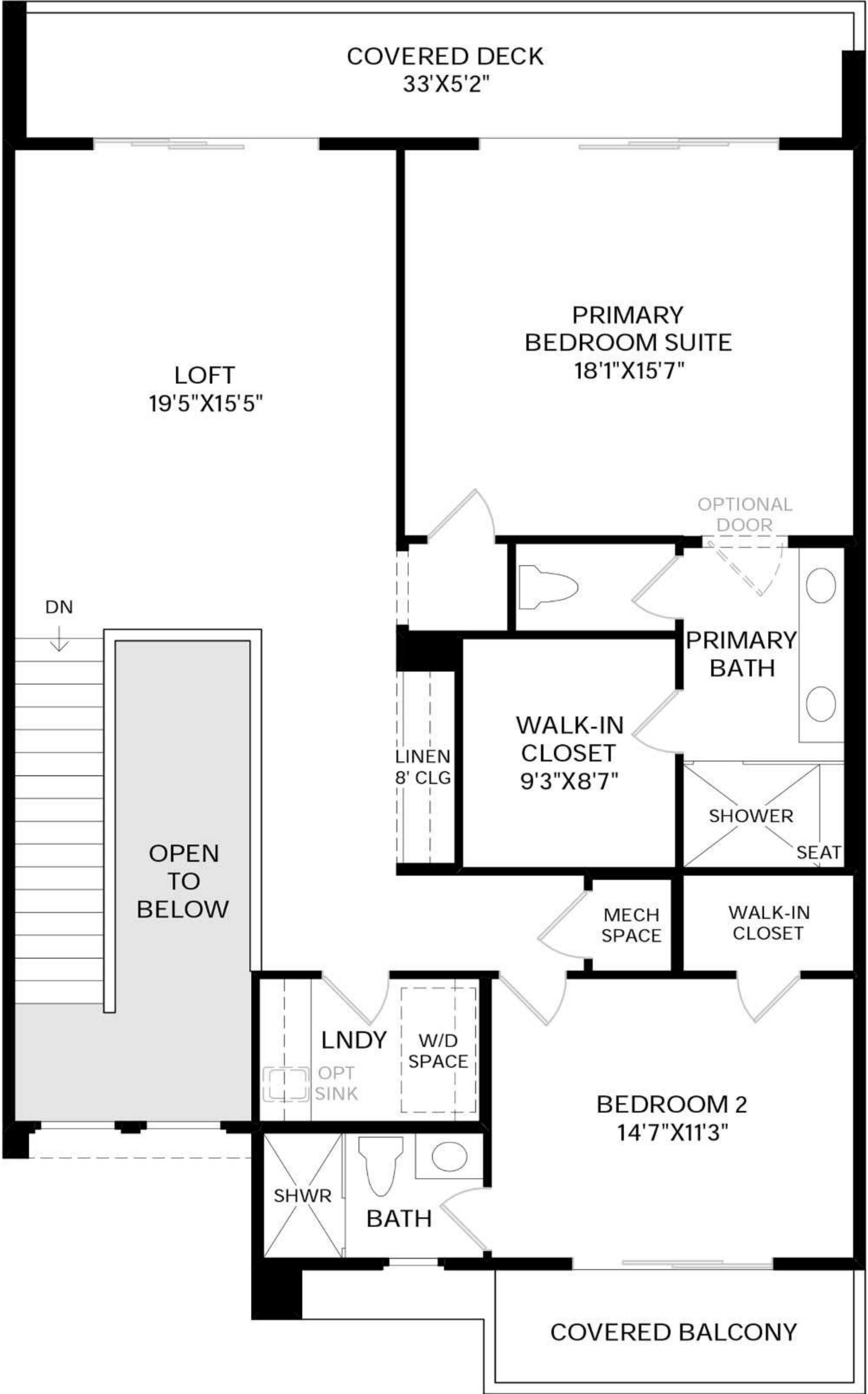
Second Floor
9' CEILING HEIGHT

FONDA FLOOR PLAN

2,351+ SF | 2 STORIES | 2-3 BEDROOM | 2.5 BATH | 2 CAR GARAGE



First Floor
9' CEILING HEIGHT



Second Floor
9' CEILING HEIGHT